

# \$1,495,000 - 605 Erskine Drive, Pacific Palisades

MLS® #25505617

**\$1,495,000**

0 Bedroom, 0.00 Bathroom,  
Land on 0 Acres

N/A, Pacific Palisades,

Rebuild The Palisades! Great opportunity to be a part of the rebuild of the Palisades. Exceptional location in the El Medio Bluffs just minutes from the Ocean! Flat lot on a highly desirable street with close proximity to the Caruso Village and the iconic Ocean view. Debris removal is under way by U.S. Army Corps of Engineers! The previous home was a 3,124sf modern architectural home completed by AIH Development!

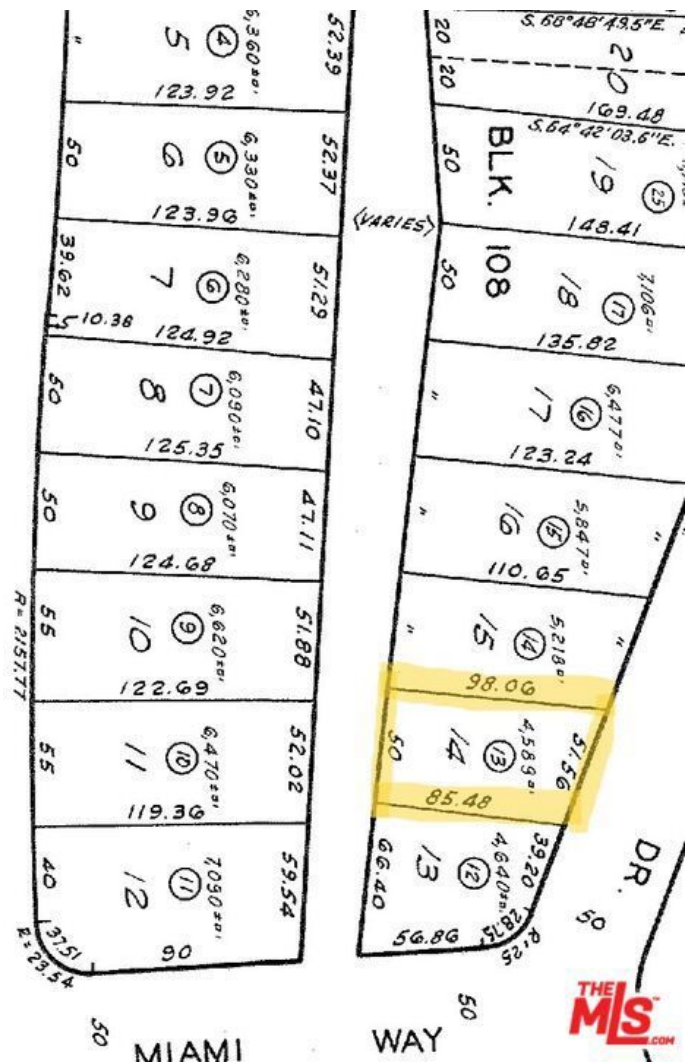
## Essential Information

MLS® #	25505617
Price	\$1,495,000
Bathrooms	0.00
Acres	0.11
Type	Land
Status	Closed
Listing Agent	Josh Picker
Listing Office	Douglas Elliman of California, Inc.

## Community Information

Address	605 Erskine Drive
Area	C15 - Pacific Palisades
Subdivision	N/A
City	Pacific Palisades
County	Los Angeles
Zip Code	90272

## Amenities



View

None

**Additional Information**

Date Listed	March 3rd, 2025
Days on Market	31
Zoning	LAR1
Short Sale	N
RE / Bank Owned	N

Based on information from California Regional Multiple Listing Service, Inc. as of December 25th, 2025 at 8:51pm PST. This information is for your personal, non-commercial use and may not be used for any purpose other than to identify prospective properties you may be interested in purchasing. Display of MLS data is usually deemed reliable but is NOT guaranteed accurate by the MLS. Buyers are responsible for verifying the accuracy of all information and should investigate the data themselves or retain appropriate professionals. Information from sources other than the Listing Agent may have been included in the MLS data. Unless otherwise specified in writing, Broker/Agent has not and will not verify any information obtained from other sources. The Broker/Agent providing the information contained herein may or may not have been the Listing and/or Selling Agent.