

\$1,980,000 - 930 Embury Street, Pacific Palisades

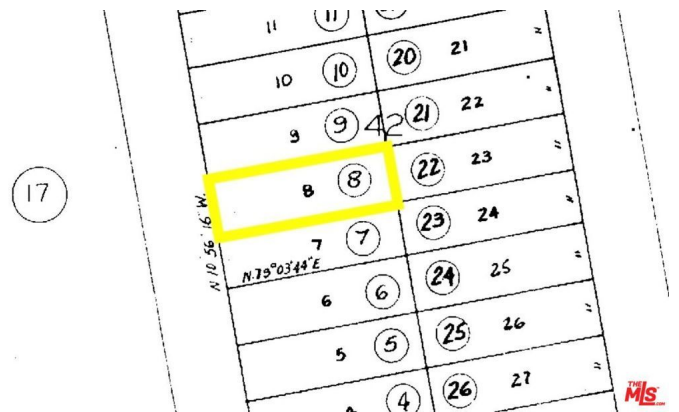
MLS® #25502891

\$1,980,000

0 Bedroom, 0.00 Bathroom,
Land on 0 Acres

N/A, Pacific Palisades,

Buyer to handle phase 2 debris removal. Great opportunity to be a part of the rebuild of the Palisades. Best priced lot in the Alphabet Streets, ideally located close to the Caruso Village. Flat lot on a desirable street. Phase 1 debris removal has been completed. Expired set of plans for a 3,113 sq ft home designed by Clark Remington. 5 bd, 5 1/2 baths. Fully approved in 2016, but never built. Will need to be modified and updated for current standards. Prior home was 1488 sq ft with 3 bd, 2 ba, detached 2 car garage and pool.



Essential Information

MLS® #	25502891
Price	\$1,980,000
Bathrooms	0.00
Acres	0.12
Type	Land
Status	Closed
Listing Agent	Joseph Cilic
Listing Office	Sotheby's International Realty

Community Information

Address	930 Embury Street
Area	C15 - Pacific Palisades
Subdivision	N/A
City	Pacific Palisades
County	Los Angeles
Zip Code	90272

Amenities

View None

Additional Information

Date Listed February 25th, 2025
Days on Market 27
Zoning LAR1
Short Sale N
RE / Bank Owned N

Based on information from California Regional Multiple Listing Service, Inc. as of February 13th, 2026 at 9:20am PST. This information is for your personal, non-commercial use and may not be used for any purpose other than to identify prospective properties you may be interested in purchasing. Display of MLS data is usually deemed reliable but is NOT guaranteed accurate by the MLS. Buyers are responsible for verifying the accuracy of all information and should investigate the data themselves or retain appropriate professionals. Information from sources other than the Listing Agent may have been included in the MLS data. Unless otherwise specified in writing, Broker/Agent has not and will not verify any information obtained from other sources. The Broker/Agent providing the information contained herein may or may not have been the Listing and/or Selling Agent.