

# **\$659,000 - 5650 Cambridge Way # 8, Culver City**

MLS® #25502303

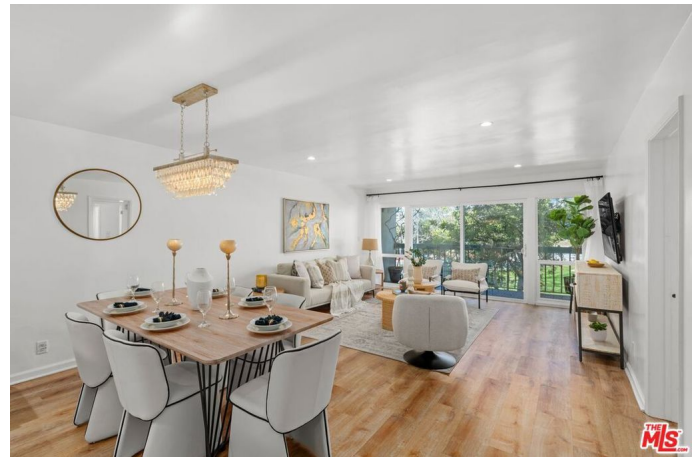
---

## **\$659,000**

2 Bedroom, 2.00 Bathroom, 1,121 sqft  
Residential on 0 Acres

N/A, Culver City,

Cambridge House is a charming boutique condo complex with only 24 units, perfectly situated in a prime Culver City location. Just minutes from downtown, shopping, and transportation, this two-bedroom, two-bath condo offers modern upgrades and exceptional convenience. This corner unit features a private balcony overlooking the park and a pool view from the bedroom window. Located near the cul-de-sac at the edge of the complex, it enjoys tranquility, privacy, and beautiful tree-lined views. Inside, the updated shines with luxury flooring throughout, contemporary LED lighting, and a sleek, modern kitchen with an expansive countertop perfect for cooking and entertaining. The open-concept design seamlessly connects the kitchen to the dining area and family room, enhancing the sense of space. Both bedrooms offer full-wall closets for ample storage, while additional closets in the hallway provide extra convenience. A stacked washer/dryer is located in-unit, with community laundry available as well. Need more storage? A locked owner storage room and additional space in the gated parking garage ensure plenty of room for belongings. Two side-by-side assigned parking spaces are included in the controlled-access garage. The HOA fees are among the lowest in the area. Cambridge House amenities include a pool, elevator, and secure entry, and the complex is pet-friendly. Fox Hills Park, just down the street, offers a jogging/walking path,



basketball, tennis, and pickleball courts, BBQ areas, and a playground. Plus, Trader Joe's, Sprouts, Starbucks, Westfield Mall, and major freeways are just minutes away, providing quick access to LAX, the Marina, and the beach. This move-in-ready condo is the perfect blend of style, comfort, and convenience. Schedule your showing today! Portable a/c with heater included.

Built in 1967

**Essential Information**

MLS® #	25502303
Price	\$659,000
Bedrooms	2
Bathrooms	2.00
Full Baths	2
Square Footage	1,121
Acres	0.47
Year Built	1967
Type	Residential
Sub-Type	Condominium
Style	Contemporary
Status	Closed
Listing Agent	Yan Erickson
Listing Office	Coldwell Banker Realty

**Community Information**

Address	5650 Cambridge Way # 8
Area	C28 - Culver City
Subdivision	N/A
City	Culver City
County	Los Angeles
Zip Code	90230

**Amenities**

Amenities	Pool
Parking Spaces	2

Parking	Assigned, Controlled Entrance, Community Structure, Side By Side
# of Garages	2
Garages	Assigned, Controlled Entrance, Community Structure, Side By Side
View	Park/Greenbelt
Has Pool	Yes
Pool	Community, Association
Security	Security Gate, Gated Community, 24 Hour Security

### **Interior**

Interior	Wood
Interior Features	Breakfast Bar, Separate/Formal Dining Room
Appliances	Dishwasher, Electric Oven, Microwave, Refrigerator, Dryer, Washer
Heating	Radiant
Cooling	None
Fireplaces	None
# of Stories	1
Stories	One

### **Additional Information**

Date Listed	February 27th, 2025
Days on Market	9
Zoning	CCR3*
Short Sale	N
RE / Bank Owned	N

Based on information from California Regional Multiple Listing Service, Inc. as of February 8th, 2026 at 8:30pm PST. This information is for your personal, non-commercial use and may not be used for any purpose other than to identify prospective properties you may be interested in purchasing. Display of MLS data is usually deemed reliable but is NOT guaranteed accurate by the MLS. Buyers are responsible for verifying the accuracy of all information and should investigate the data themselves or retain appropriate professionals. Information from sources other than the Listing Agent may have been included in the MLS data. Unless otherwise specified in writing, Broker/Agent has not and will not verify any information obtained from other sources. The Broker/Agent providing the information contained herein may or may not have been the Listing and/or Selling Agent.