

# \$2,950,000 - 14912 Mc Kendree Avenue, Pacific Palisades

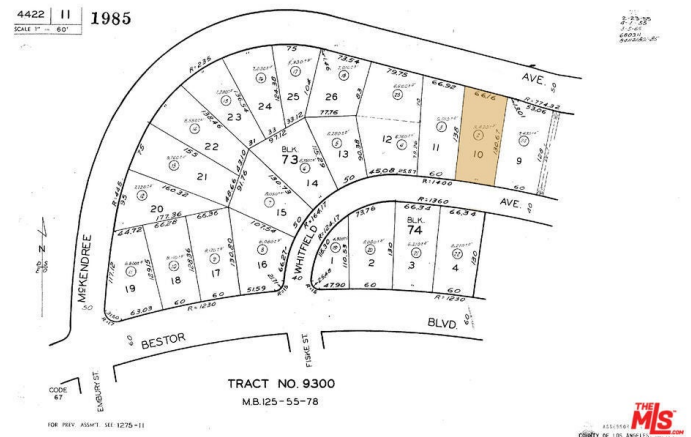
MLS® #25500561

**\$2,950,000**

0 Bedroom, 0.00 Bathroom,  
Land on 0 Acres

N/A, Pacific Palisades,

BE PART OF THE REBUILD. I am offering another highly desirable Pacific Palisades lot. This 8436 square foot lot sits above the Palisades Village with sweeping ocean views. This is an opportunity to rebuild a 3247 square foot home plus an additional 10% square footage for a buildable maximum of 3571 square feet through the fast track permitting process OR to build a home of maximum square footage per the lot size with traditional permitting process. There is limitless potential for the visionary buyer. This is a rare chance to invest in the beloved Palisades, which will again become one of the most close-knit and sought after communities in all of Los Angeles. EPA Phase I is complete for this lot as of 2/5/25 and Phase II began 2/14/25. Serious offers only.



## Essential Information

MLS® #	25500561
Price	\$2,950,000
Bathrooms	0.00
Acres	0.19
Type	Land
Status	Closed
Listing Agent	Simon Beardmore
Listing Office	Sotheby's International Realty

## Community Information

Address	14912 Mc Kendree Avenue
Area	C15 - Pacific Palisades
Subdivision	N/A
City	Pacific Palisades
County	Los Angeles
Zip Code	90272

### **Amenities**

View	Coastline, Ocean
------	------------------

### **Additional Information**

Date Listed	February 19th, 2025
Days on Market	6
Zoning	LAR1
Short Sale	N
RE / Bank Owned	N

Based on information from California Regional Multiple Listing Service, Inc. as of December 20th, 2025 at 10:15am PST. This information is for your personal, non-commercial use and may not be used for any purpose other than to identify prospective properties you may be interested in purchasing. Display of MLS data is usually deemed reliable but is NOT guaranteed accurate by the MLS. Buyers are responsible for verifying the accuracy of all information and should investigate the data themselves or retain appropriate professionals. Information from sources other than the Listing Agent may have been included in the MLS data. Unless otherwise specified in writing, Broker/Agent has not and will not verify any information obtained from other sources. The Broker/Agent providing the information contained herein may or may not have been the Listing and/or Selling Agent.