

\$3,100 - 1830 1/4 Lucile Drive, Los Angeles

MLS® #25497033

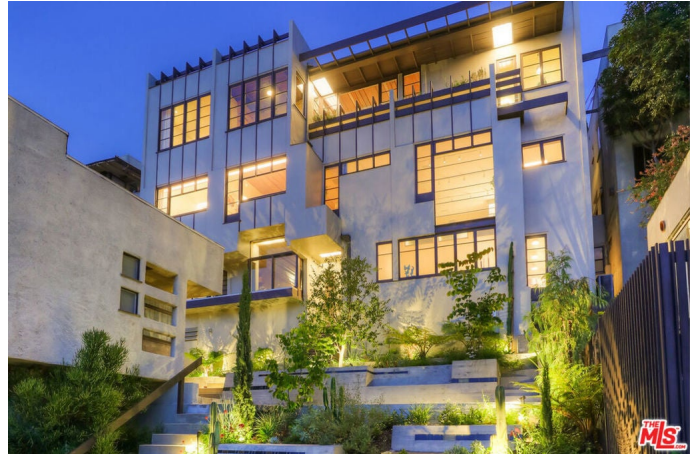
\$3,100

1 Bedroom, 1.00 Bathroom, 549 sqft

Residential Lease on 0 Acres

N/A, Los Angeles,

Lease one of the Sachs Apartments, the 1924 modernist jewel by renown architect Rudolf Schindler. Located in prime Silver Lake, this airy one-bedroom unit features Schindler's signature woodwork detailing and oversized windows framing lovely views of the Griffith Park Observatory and Hollywood Sign. The apartment overlooks a gorgeous community garden by celebrated landscaping firm Terremoto, and has features that include stylish built-ins, a dining nook, beautiful wood flooring and stainless appliances by Fisher & Paykel. Amenities include a private garage for one vehicle and community laundry. The intimate 16-unit complex places you a few short blocks from the Silver Lake Reservoir and Sunset Junction, providing nearby options for coffee, dining, nightlife, and the twice-weekly Silver Lake Farmer's Market. Schindler's groundbreaking style is often imitated but has never been surpassed; in this modernist time capsule you can reside within architectural history.



Built in 1924

Essential Information

MLS® #	25497033
Price	\$3,100
Bedrooms	1
Bathrooms	1.00
Full Baths	1

Square Footage	549
Acres	0.32
Year Built	1924
Type	Residential Lease
Sub-Type	Condominium
Style	Modern
Status	Closed
Listing Agent	Ronda Doyal
Listing Office	Coldwell Banker Realty

Community Information

Address	1830 1/4 Lucile Drive
Area	C21 - Silver Lake - Echo Park
Subdivision	N/A
City	Los Angeles
County	Los Angeles
Zip Code	90026

Amenities

Parking Spaces	1
View	City Lights, Hills
Pool	None

Interior

Interior	Wood
Appliances	Refrigerator
Heating	Wall Furnace
Fireplaces	None
# of Stories	1
Stories	One

Additional Information

Date Listed	February 12th, 2025
Days on Market	22
Zoning	LAR3
Short Sale	N
RE / Bank Owned	N

Based on information from California Regional Multiple Listing Service, Inc. as of February 5th, 2026 at 7:35am PST.
This information is for your personal, non-commercial use and may not be used for any purpose other than to identify

prospective properties you may be interested in purchasing. Display of MLS data is usually deemed reliable but is NOT guaranteed accurate by the MLS. Buyers are responsible for verifying the accuracy of all information and should investigate the data themselves or retain appropriate professionals. Information from sources other than the Listing Agent may have been included in the MLS data. Unless otherwise specified in writing, Broker/Agent has not and will not verify any information obtained from other sources. The Broker/Agent providing the information contained herein may or may not have been the Listing and/or Selling Agent.