

\$6,500 - 3822 Mclaughlin Avenue, Los Angeles

MLS® #25495695

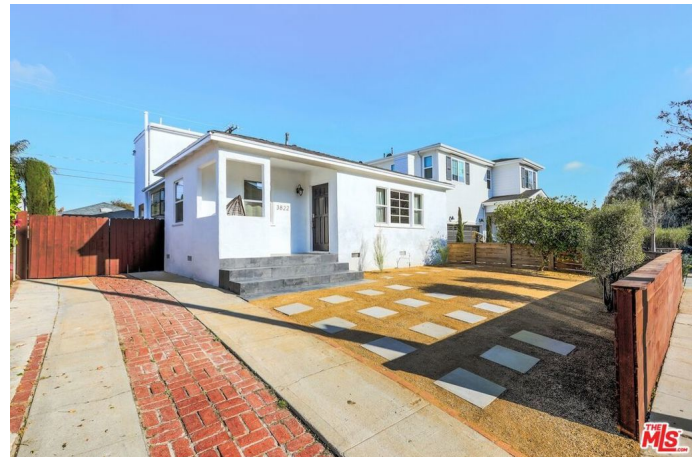
\$6,500

4 Bedroom, 2.00 Bathroom, 1,951 sqft

Residential Lease on 0 Acres

N/A, Los Angeles,

Charming and appealing, this spacious single-family, two-story home features 4 bedrooms and 2 bathrooms. Its convenient location between downtown Culver City and Venice Beach offers easy access to the Metro Expo Line, Silicon Beach tech companies (Google, YouTube, Hulu, Snapchat, etc.), Trader Joe's, Whole Foods, Venice Beach, Abbott Kinney, Marina Del Rey, LAX, and the 10 and 405 Freeways. This bright and airy home, spanning over 1,900 sq ft, boasts beautiful hardwood floors throughout and seamlessly blends modern comfort with traditional accents, thanks to a recent renovation. The ground floor includes a living room with a wood-burning fireplace, a dining room, and a large, fully renovated kitchen with tile flooring, new cabinets, and new stainless steel appliances, including a gas stove, dishwasher, microwave, washer, and dryer. Two generously sized bedrooms and a full, renovated bathroom with a walk-in shower are also located on this level, along with a large family room featuring ambient recessed lighting and patio doors that open to a deck and a peaceful, secluded garden. Upstairs, you'll find two additional generously sized bedrooms and a full, renovated bathroom with twin sinks and a bath/shower. The house is equipped with central AC/Heat throughout. A long driveway to the side leads to the rear of the house and a two-car garage. Local amenities abound, with plenty of independent shops, cafes, bars, and restaurants, plus a



fantastic Sunday farmers market just a few blocks away. Don't miss the wonderful experience of visiting a Japanese market and restaurants located just over half a mile away. Local schools are plentiful and highly rated.

Built in 1947

Essential Information

MLS® #	25495695
Price	\$6,500
Bedrooms	4
Bathrooms	2.00
Full Baths	2
Square Footage	1,951
Acres	0.11
Year Built	1947
Type	Residential Lease
Sub-Type	Single Family Residence
Style	Contemporary
Status	Closed
Listing Agent	Alex 'zan' Sacker
Listing Office	KW SELA

Community Information

Address	3822 Mclaughlin Avenue
Area	C13 - Palms - Mar Vista
Subdivision	N/A
City	Los Angeles
County	Los Angeles
Zip Code	90066

Amenities

Parking Spaces	2
Parking	Garage, Door-Multi, Driveway, RV Potential
Garages	Garage, Door-Multi, Driveway, RV Potential
View	None
Security	Gated Community

Exterior

Exterior Features	Brick Driveway
Lot Description	Back Yard, Front Yard, Landscaped, Yard
Windows	Double Pane Windows
Roof	Composition, Shingle
Foundation	Raised

Interior

Interior	Stone, Wood
Appliances	Gas Oven, Microwave, Dishwasher, Disposal
Heating	Central
Cooling	Central Air
Fireplace	Yes
Fireplaces	Living Room
# of Stories	1
Stories	Two

Additional Information

Date Listed	February 11th, 2025
Days on Market	69
Zoning	LAR1
Short Sale	N
RE / Bank Owned	N

Based on information from California Regional Multiple Listing Service, Inc. as of December 23rd, 2025 at 7:40am PST. This information is for your personal, non-commercial use and may not be used for any purpose other than to identify prospective properties you may be interested in purchasing. Display of MLS data is usually deemed reliable but is NOT guaranteed accurate by the MLS. Buyers are responsible for verifying the accuracy of all information and should investigate the data themselves or retain appropriate professionals. Information from sources other than the Listing Agent may have been included in the MLS data. Unless otherwise specified in writing, Broker/Agent has not and will not verify any information obtained from other sources. The Broker/Agent providing the information contained herein may or may not have been the Listing and/or Selling Agent.