

\$5,950 - 4142 Wade Street, Los Angeles

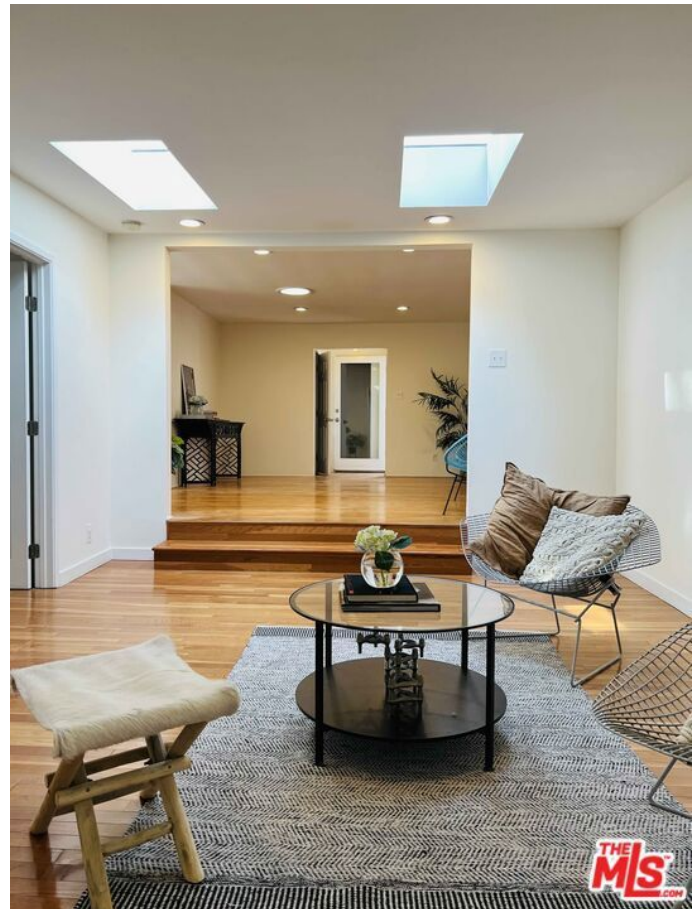
MLS® #25487295

\$5,950

3 Bedroom, 2.00 Bathroom, 1,450 sqft
Residential Lease on 0 Acres

N/A, Los Angeles,

In a coveted pocket of Culver City West, this delightful 1,450-square-foot home offers an irresistible blend of vintage charm and contemporary living. Situated on a spacious two-home lot adjacent to Culver West Park, this front home presents a rare opportunity for those seeking a perfect Westside sanctuary. Step inside to discover a light-filled interior anchored by a stunning sunken living room, where two skylights flood the space with natural light. The kitchen stands as a focal point, featuring elegant slate flooring that beautifully complements an antique Wedgwood stove. Generous countertop space and ample cabinet storage provide both functionality and style. The home boasts three well-proportioned bedrooms, each offering a peaceful retreat. Two updated bathrooms showcase modern fixtures and contemporary tilework. Enjoy the outdoors in your fenced-in, private rear porch and front yard. Tucked away on a tranquil cul-de-sac, this property delivers unparalleled convenience with just a short ten-minute drive to the beach or vibrant downtown Culver City. The location is a dream, with renowned eateries like Rockenwagners, Ginger's Ice Cream, Hatchet Hall, Tangeroa, Sunny Blue, and Minotti's just moments away. Proximity to major freeways and local amenities makes this home a true urban oasis! The home is the front unit on a Two-House Lot. Parking includes a tandem two-car spot on the shared driveway. The FULL garage IS included in the lease. The



Housing Provider will pay for gas and the gardener. The Tenant pays for all other utilities. Pets are allowed with an additional deposit. Washer/ dryer in room in attached garage. Front yard included with the possibility to enclose it at renter's cost. Available now. Appointment only. Text Stefany (310) 428-0873 for showings.

Built in 1952

Essential Information

MLS® #	25487295
Price	\$5,950
Bedrooms	3
Bathrooms	2.00
Full Baths	1
Square Footage	1,450
Acres	0.18
Year Built	1952
Type	Residential Lease
Sub-Type	Single Family Residence
Status	Closed
Listing Agent	Stefany Gonzalez
Listing Office	ACME Real Estate

Community Information

Address	4142 Wade Street
Area	C28 - Culver City
Subdivision	N/A
City	Los Angeles
County	Los Angeles
Zip Code	90066

Amenities

Utilities	Gardener, Gas
Parking Spaces	2
Parking	Door-Single, Driveway, Garage, Tandem
# of Garages	1

Garages	Door-Single, Driveway, Garage, Tandem
Pool	None

Interior

Interior	Wood
Appliances	Dishwasher, Disposal, Refrigerator, Dryer, Washer
Heating	Forced Air, Floor Furnace
Fireplaces	None
# of Stories	1
Stories	Multi/Split

Additional Information

Date Listed	January 23rd, 2025
Days on Market	71
Zoning	CCR3A*
Short Sale	N
RE / Bank Owned	N

Based on information from California Regional Multiple Listing Service, Inc. as of January 16th, 2026 at 5:50am PST. This information is for your personal, non-commercial use and may not be used for any purpose other than to identify prospective properties you may be interested in purchasing. Display of MLS data is usually deemed reliable but is NOT guaranteed accurate by the MLS. Buyers are responsible for verifying the accuracy of all information and should investigate the data themselves or retain appropriate professionals. Information from sources other than the Listing Agent may have been included in the MLS data. Unless otherwise specified in writing, Broker/Agent has not and will not verify any information obtained from other sources. The Broker/Agent providing the information contained herein may or may not have been the Listing and/or Selling Agent.