

# **\$7,000 - 136 Heath Meadow Place, Simi Valley**

MLS® #225002805

---

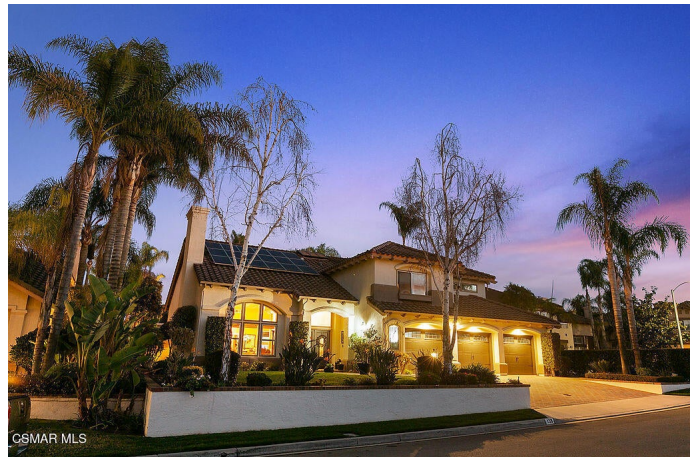
## **\$7,000**

4 Bedroom, 4.00 Bathroom, 3,506 sqft

Residential Lease on 0 Acres

Legacy Collection-363 - 363, Simi Valley,

This beautiful home sits behind the gates in the Legacy Collection at Wood Ranch. It is a well-cared for home that offers a desirable floor plan and abundant space for family and guests. Enjoy Wood Ranch Country Club, parks, tennis courts, basketball courts, playground and soccer fields, shopping and dining. Solar Panels offer energy efficiency and savings. Enjoy the rich color scheme on the 3-car garage home with a brick paver driveway and beautifully designed hardscape and landscape. The home boasts a wonderful entertainer's backyard with pool, raised spa, built-in BBQ, patio pavers, and pergola and freshly renewed landscaping. The exquisite kitchen is equipped with Viking appliances, granite counter tops and custom cabinetry and passthrough bar and breakfast nook. Skylights and abundant windows fill the home with natural light. The seller has installed crown molding and custom baseboards throughout the house. The main floor has incredible vaulted ceilings, a fireplace and architectural features including a built-in wine rack next to the formal dining area and a passthrough fireplace with ornate ironwork to warm the family room and kitchen. The primary bedroom is also on the main floor and boasts double entry doors, vaulted ceilings, high end ceiling fan, dual sided fireplace, retreat area, direct access to the backyard, his and hers sinks, vanity, Jacuzzi tub, dual shower heads, travertine tiles and extra-large walk-in closet. All the remaining bedrooms are



upstairs, oversized and inviting.

Built in 1992

**Essential Information**

MLS® #	225002805
Price	\$7,000
Bedrooms	4
Bathrooms	4.00
Full Baths	3
Half Baths	1
Square Footage	3,506
Acres	0.27
Year Built	1992
Type	Residential Lease
Sub-Type	Single Family Residence
Style	Contemporary
Status	Closed
Listing Agent	Darin Arrasmith
Listing Office	Newbridge Real Estate Services

**Community Information**

Address	136 Heath Meadow Place
Area	SWR - Simi Wood Ranch
Subdivision	Legacy Collection-363 - 363
City	Simi Valley
County	Ventura
Zip Code	93065

**Amenities**

Amenities	Maintenance Grounds, Playground, Tennis Court(s), Picnic Area, Sport Court
Utilities	Association Dues, Gardener, Pool, Cable Available
Parking Spaces	3
Parking	Door-Multi, Direct Access, Garage, Garage Door Opener, Driveway, Paved
# of Garages	3
Garages	Door-Multi, Direct Access, Garage, Garage Door Opener, Driveway, Paved
Has Pool	Yes
Pool	In Ground, Private, Gas Heat, Permits

Security	Gated Community
----------	-----------------

## Exterior

Exterior	Stucco
Exterior Features	Barbecue, Rain Gutters
Lot Description	Back Yard, Lawn, Landscaped, Level, Near Park, Rectangular Lot, Sprinkler System, Yard, Paved, Sprinklers In Front, Sprinklers In Rear, Sprinklers On Side, Sprinklers Timer, Walkstreet
Windows	Double Pane Windows, Blinds
Roof	Spanish Tile
Construction	Stucco
Foundation	Slab

## Interior

Interior	Carpet, Wood
Interior Features	Breakfast Area, Cathedral Ceiling(s), Separate/Formal Dining Room, High Ceilings, Recessed Lighting, Two Story Ceilings, Bedroom on Main Level, Main Level Primary, Primary Suite, Bar, Open Floorplan, Walk-In Pantry, Wet Bar
Appliances	Dishwasher, Electric Cooking, Gas Cooking, Disposal, Microwave, Refrigerator, Range Hood, Water To Refrigerator, Double Oven, Self Cleaning Oven
Heating	Central, Natural Gas
Cooling	Central Air, Zoned
Fireplace	Yes
Fireplaces	Gas, Living Room, Primary Bedroom, Kitchen, Multi-Sided, See Through
# of Stories	2
Stories	Two

## School Information

District	Simi Valley Unified
----------	---------------------

## Additional Information

Date Listed	June 5th, 2025
Days on Market	135
Zoning	RL-2.8
Short Sale	N
RE / Bank Owned	N

Based on information from California Regional Multiple Listing Service, Inc. as of January 17th, 2026 at 11:45pm PST.  
This information is for your personal, non-commercial use and may not be used for any purpose other than to identify

prospective properties you may be interested in purchasing. Display of MLS data is usually deemed reliable but is NOT guaranteed accurate by the MLS. Buyers are responsible for verifying the accuracy of all information and should investigate the data themselves or retain appropriate professionals. Information from sources other than the Listing Agent may have been included in the MLS data. Unless otherwise specified in writing, Broker/Agent has not and will not verify any information obtained from other sources. The Broker/Agent providing the information contained herein may or may not have been the Listing and/or Selling Agent.