

# \$345,000 - 19036 Janine Street, Adelanto

MLS® #225000101

## \$345,000

3 Bedroom, 2.00 Bathroom, 1,620 sqft  
Residential on 0 Acres

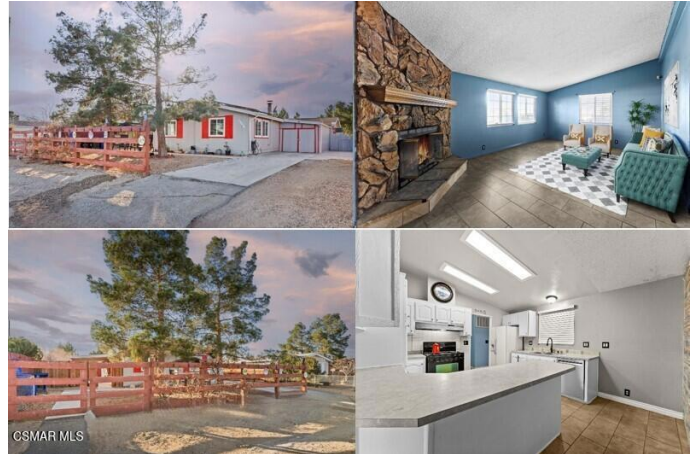
N/A, Adelanto,

Welcome to your very own oasis with a view of the desert landscape and mountains. This spacious 3bed 2bath home, has an open floor plan and is move in ready. Home welcomes you into an inviting bright and cheery living room; with high ceilings. New luxury engineered wood through out (except 1 bedroom). Enjoy the family room with a cozy wood burning rock fireplace. Eat-in Kitchen features lots of cabinets and breakfast sitting area, open to a dedicated dining area. Both bathrooms have a tub, main bedroom has high ceilings and features a soaking tub, separate shower and walk in closet. There is an attached garage & 1 covered carport with two more parking spots on the driveway. Separate parking area for RV and Boat. So many features to this home including but not limited to: solar panels, new hybrid high efficiency smart tank electric water heater with leak detection and automatic shut off. Central A/C unit and dual pane windows throughout. Smart rock garden landscape, huge covered porch, manual sprinklers system and large private fenced yard. Solar panels, 2 sheds, stove, refrigerator, washer, dryer, gazebo and swing are all included with the sale. Don't miss out, will sell fast!

Built in 1990

## Essential Information

MLS® # 225000101



Price	\$345,000
Bedrooms	3
Bathrooms	2.00
Full Baths	2
Square Footage	1,620
Acres	0.17
Year Built	1990
Type	Residential
Sub-Type	Single Family Residence
Style	Traditional
Status	Closed
Listing Agent	Carmela Jacobs
Listing Office	Carmela Realty

### Community Information

Address	19036 Janine Street
Area	ELMG - El Mirage
Subdivision	N/A
City	Adelanto
County	San Bernardino
Zip Code	92301

### Amenities

Parking Spaces	2
Parking	Attached Carport, Direct Access, Door-Single, Driveway, Garage, On Street, RV Potential, Tandem
# of Garages	1
Garages	Attached Carport, Direct Access, Door-Single, Driveway, Garage, On Street, RV Potential, Tandem
View	Desert, Mountain(s), Panoramic
Security	Carbon Monoxide Detector(s), Smoke Detector(s)

### Exterior

Lot Description	Sprinkler System, Back Yard, Desert Front, Landscaped, Level, Paved, Rectangular Lot, Sprinklers In Front, Sprinklers Manual, Yard
Windows	Blinds
Foundation	Permanent, Slab

### Interior

Interior	Carpet, Wood
Interior Features	All Bedrooms Down, Bedroom on Main Level, Cathedral Ceiling(s), High Ceilings, Main Level Primary, Primary Suite, Walk-In Closet(s)
Appliances	Dishwasher, Disposal, Electric Water Heater, Gas Cooking, Refrigerator, Vented Exhaust Fan
Heating	Central, Fireplace(s), Forced Air, Natural Gas
Cooling	Central Air
Fireplace	Yes
Fireplaces	Family Room, Raised Hearth
# of Stories	1
Stories	One

### **School Information**

District	Adelanto
----------	----------

### **Additional Information**

Date Listed	January 8th, 2025
Days on Market	140
Zoning	R-1
Short Sale	N
RE / Bank Owned	N

Based on information from California Regional Multiple Listing Service, Inc. as of February 4th, 2026 at 12:32pm PST. This information is for your personal, non-commercial use and may not be used for any purpose other than to identify prospective properties you may be interested in purchasing. Display of MLS data is usually deemed reliable but is NOT guaranteed accurate by the MLS. Buyers are responsible for verifying the accuracy of all information and should investigate the data themselves or retain appropriate professionals. Information from sources other than the Listing Agent may have been included in the MLS data. Unless otherwise specified in writing, Broker/Agent has not and will not verify any information obtained from other sources. The Broker/Agent providing the information contained herein may or may not have been the Listing and/or Selling Agent.